

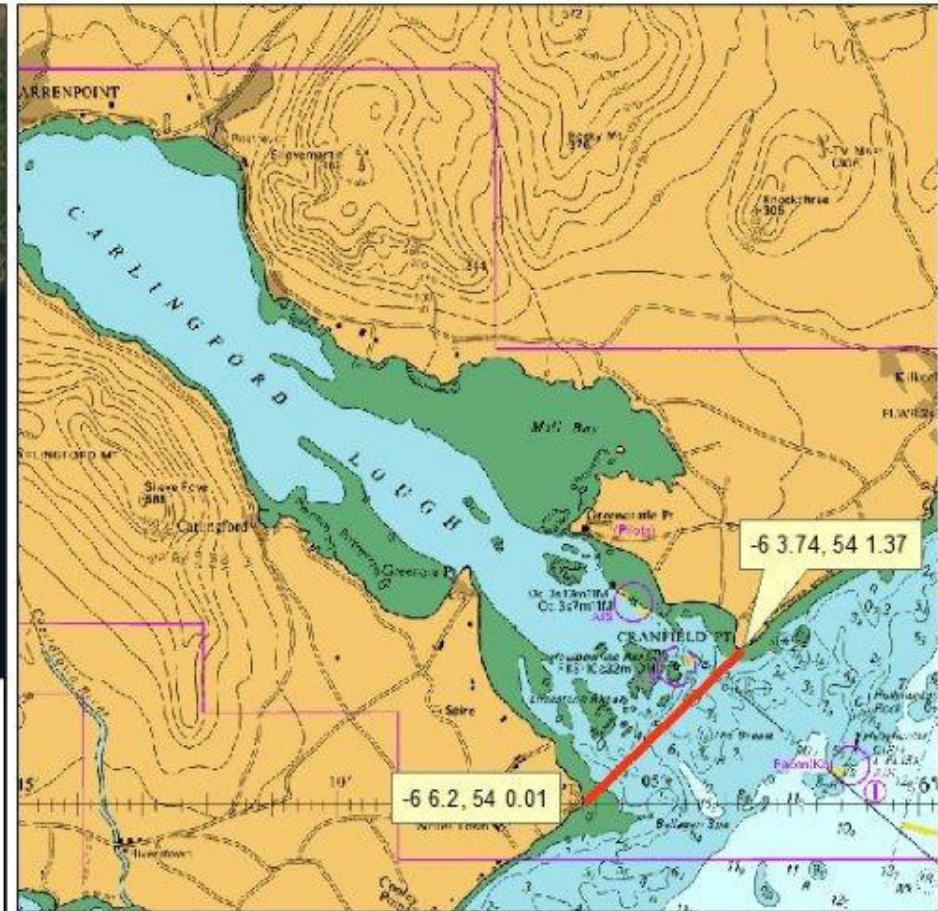
Northern Ireland Marine Disease Control Compartments - Carlingford Lough as of 10 Dec 2019



Disease Status

Marteilia Refringens	Negative
Bonamia Ostreae	Negative
Oyster Herpes Virus (OsHV-1)	Positive
Perkinsus Marinus	Negative
Mycrocytos Mackini	Negative
Bonamia Exitiosa	Negative
Taura Syndrome	Negative
Yellow Head Disease	Negative
White Spot Disease (WSS)	Negative

The disease status of this compartment is currently in accordance with COUNCIL DIRECTIVE 2006/88/EC and the OIE Manual. In the event of infection or eradication the status will change and notice will be disseminated accordingly.



Co ordinates in degrees decimal minutes
Datum WGS84

Physical description

That part of Carlingford Lough comprising the territorial tidal waters west of an imaginary straight line drawn between the most southerly point of Cranfield Point in County Down and the most easterly point of Ballagan Point in County Louth.

(In the event of any discrepancy between the descriptive position and the chart, the descriptive position shall prevail)



Department of
**Agriculture, Environment
and Rural Affairs**

www.daera-ni.gov.uk

A living, working, active landscape valued by everyone.