

Newry, Mourne and Down District Council

Council Area Profile

September 2019

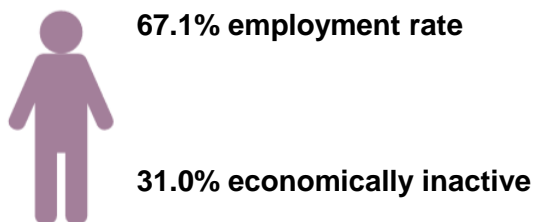
GVA

GVA in Newry, Mourne and Down in 2017 was £2.5bn. This represented 6.2% of the NI share¹.

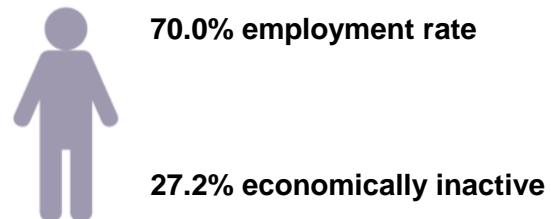
Labour Market Structure

In 2018, the employment rate for NI was 70.0% and the economic inactivity rate was 27.2%. Newry, Mourne and Down had an employment rate (67.1%) below the NI rate and an inactivity rate (31.0%) higher than the NI rate, which is among the highest across council areas.

Newry, Mourne and Down

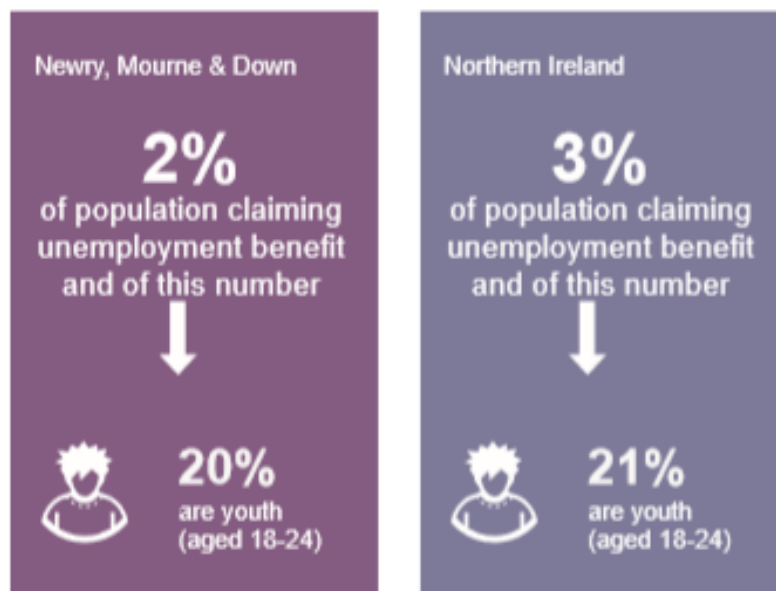


Northern Ireland



In 2017 Newry, Mourne and Down had a self-employment rate of 18% compared to the NI average of 16%.²

In 2018 2% of the population in Newry, Mourne and Down were claiming unemployment benefit which was below the rate for NI at 3%. Approximately one-fifth of those in receipt of claiming benefits were young people (aged 18-24).³



¹ Office for National Statistics (ONS)

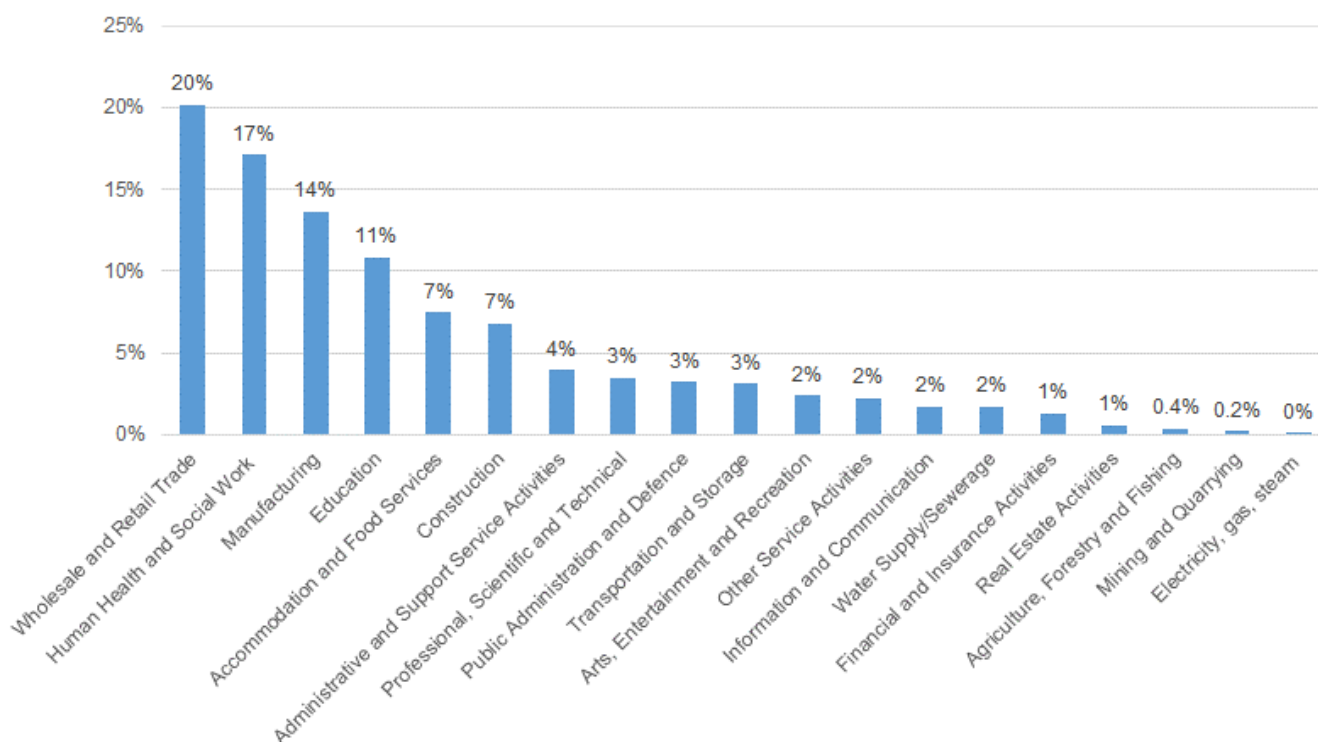
² Labour Force Survey, January-December 2018

³ Claimant Count, NISRA

Employee Jobs

In 2018, there were 57,618 jobs within Newry, Mourne and Down representing 8% of the NI total. Wholesale and Retail Trade is Newry, Mourne and Down's largest sector (20%) followed by Human Health and Social Work (17%) and Manufacturing (14%).⁴

Figure 1: Employee Jobs by Industry, 2017



The private sector accounted for 75% of all employee jobs in Newry, Mourne and Down in 2018 compared to the NI average of 73%.⁵

Table 1: Public / Private Sector, 2018

District Council	Totals	Public Sector %	Private Sector %
Newry, Mourne and Down	57,618	25%	75%
Total	759,359	27%	73%

⁴ Industry statistics refer to 2017 data. Data for employee jobs by industry is published every 2 years.

⁵ NI Business Register and Employment Survey

Redundancies

In 2018 there were 2,498 redundancies across NI. Newry, Mourne and Down had one of the lowest number of redundancies across the District Councils (55 redundancies or 2% of NI total).⁶

Earnings

In 2018 annual median earnings by place of residence (£21,840) and place of work (£21,720) for Newry, Mourne and Down were lower than the annual median earnings figure for NI (£21,923).⁷



Agriculture⁸

In total there are 3,880 farms in Newry, Mourne and Down which represents 16% of total NI farms. The majority of farm businesses in Newry, Mourne and Down are classified as very small (83%).

Table 2: Number of farms by farm business size⁹ and by District Council in Northern Ireland, June 2018

District Council	Average SO/farm (€ '000)	Number of farms					
		V. Small	Small	Medium	Large	Total	
Newry, Mourne and Down	53.9	3,224	362	121	173	3,880	
NI Total	77.6	19,188	2,824	1,190	1,693	24,895	

⁶ Source: NISRA, Council Area Statistics

⁷ Source: Annual Survey of Hours and Earnings, NISRA

⁸ DAERA June Agricultural Census, June 2018

⁹ Note: Farm business size classification is calculated from Standard Labour Requirements Requirements (SLR). The total SLR for each farm is calculated by multiplying its crop areas and livestock numbers by the appropriate SLR coefficients and then summing the results for all enterprises on the farm. A standard labour unit is equivalent to 1,900 hours of work per year.

Cattle and Sheep farms constitute 85% of farms in Newry, Mourne and Down.

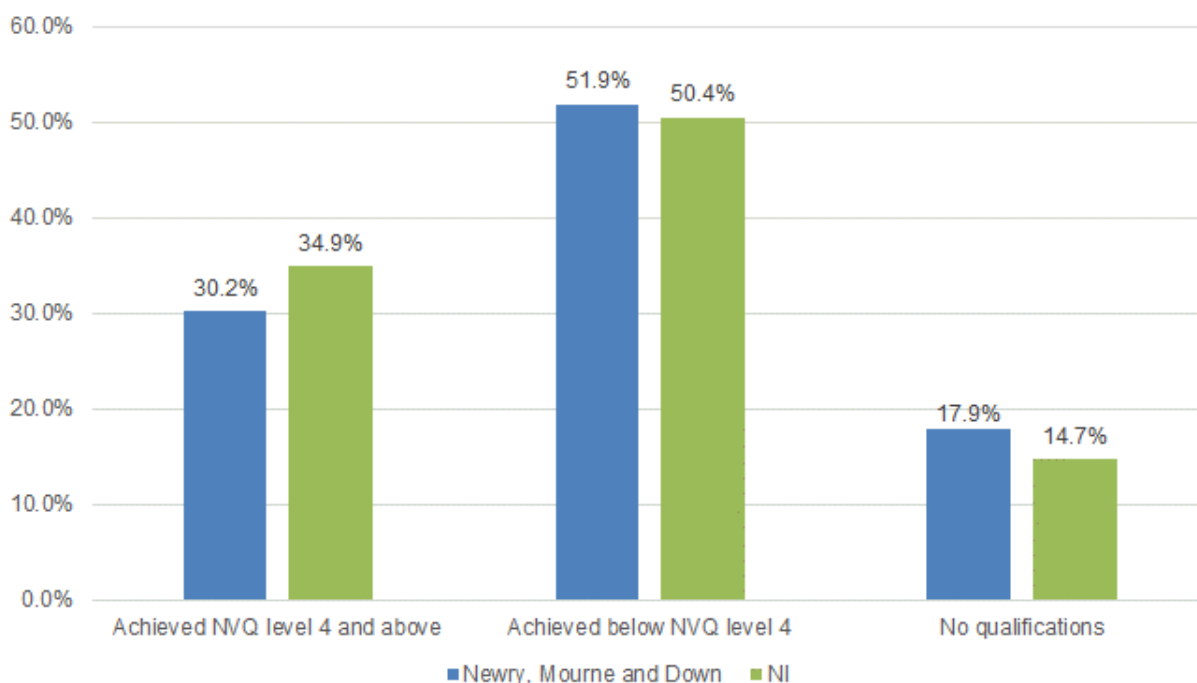
Table 3: Top 3 farm types by number of farms by District Council in Northern Ireland, June 2018

District Council	General	Dairy	Cattle & Sheep		Total number of farms
	Cropping		LFA ¹⁰	lowland	
Newry, Mourne and Down	83	257	2,587	728	3,880
NI Total	574	2,545	14,700	5,109	24,895

Qualifications

In 2018, Newry, Mourne and Down had a lower rate of 16-64 year olds with NVQ level 4 and above¹¹ compared to the NI average (30.2% and 34.9% respectively). Newry, Mourne and Down had a higher rate of people aged 16-64 without any qualifications compared to NI (17.9% and 14.7% respectively).¹²

Figure 2: Qualifications based on working age population (16-64), 2018



¹⁰ Less Favoured Area

¹¹ This relates to those at degree level and above which includes foundation degrees, higher degrees, teaching and nursing degrees.

¹² NISRA, [Labour Force Survey 2018](#)

Cross Border Movements

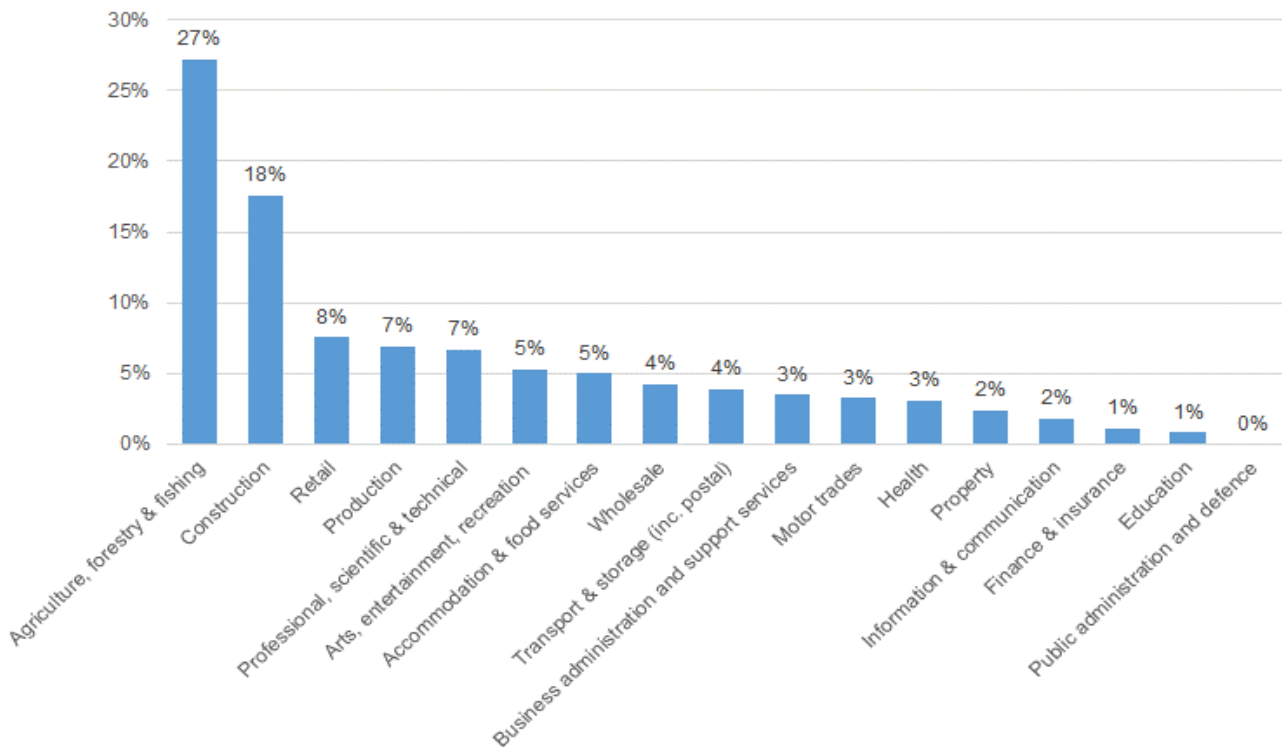
Analysis of Mobile Network Operator (MNO) information¹³ indicates that approximately 15% of crossings from NI to ROI by NI residents started in Newry Mourne and Down District Council. Around 22% of trips from ROI to NI by ROI residents ended in the council area.

On average residents made around 1.5 cross border trips per week. 35% of cross border travel was for work purposes and 65% was for social/leisure purposes.

Business Profile

In 2019 there were 8,745 businesses located within Newry, Mourne and Down representing 12% of the NI population. The vast majority (92%) are classified as micro (0-9 employees). The top 3 sectors in Newry, Mourne and Down are: Agriculture, forestry and fishing (27%), Construction (18%) and Retail (8%)¹⁴.

Figure 3: Number of VAT and/or PAYE Registered Businesses Operating in Newry, Mourne and Down by Broad Industry Group, 2019



Foreign Direct Investment (FDI)

According to Invest NI's Newry, Mourne and Down Council Briefing¹⁵ over the period 2014/15 to 2018/19, 12 externally owned businesses were offered support that contributed towards investment commitments of £29m and assisted 143 jobs in the area.

¹³ DfE (2018) [Cross Border Movements: The movement of people across the NI-Rol border](#)

¹⁴ Source: NISRA, Inter-Departmental Business Register

¹⁵ <https://secure.investni.com/static/library/invest-ni/documents/investni-support-council-area-newry-mourne-and-down-2019.pdf>

Web-links to useful data sources

[Labour Force Survey](#)

[Claimant Count](#)

[Regional analysis and trends](#)

[Quarterly Employment Survey](#)

[Business Register and Employment Survey](#)

[Annual Business Inquiry](#)

[Redundancies](#)

[Annual Survey of Hours and Earnings](#)

[Regional Gross Value Added \(Balanced\)](#)

[NI Composite Economic Index](#)

[Broad Economy Sales and Exports Statistics](#)

[Inter Departmental Business Register](#)

[Agricultural Census 2018](#)

[Local Government Tourism Statistics](#)

[Invest NI Regional Profiles](#)

- [Eastern](#)
- [North Eastern](#)
- [North Western](#)
- [Southern](#)
- [Western](#)

[Northern Ireland Life and Times Survey 2018](#)

[Northern Ireland Trade and Investment Under 'No Deal'](#)

[The movement of people across the Northern Ireland - Republic of Ireland border](#)

[An analysis of migrant workers from the NI census](#)