

Mid and East Antrim Borough Council

Council Area Profile

**September 2019**

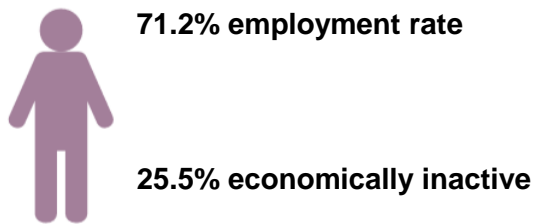
## GVA

GVA in Mid & East Antrim in 2017 was £2.1bn. This represented 5.3% of the NI total.<sup>1</sup>

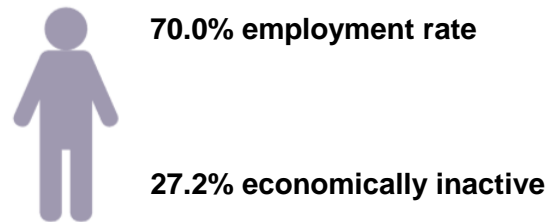
## Labour Market Structure

In 2018, the employment rate for NI was 70.0% and the economic inactivity rate was 27.2%. Mid & East Antrim had a slightly higher employment rate than NI of 71.2%. A lower proportion of the population in Mid & East Antrim were economically inactive (25.5%) compared to NI.

### Mid and East Antrim

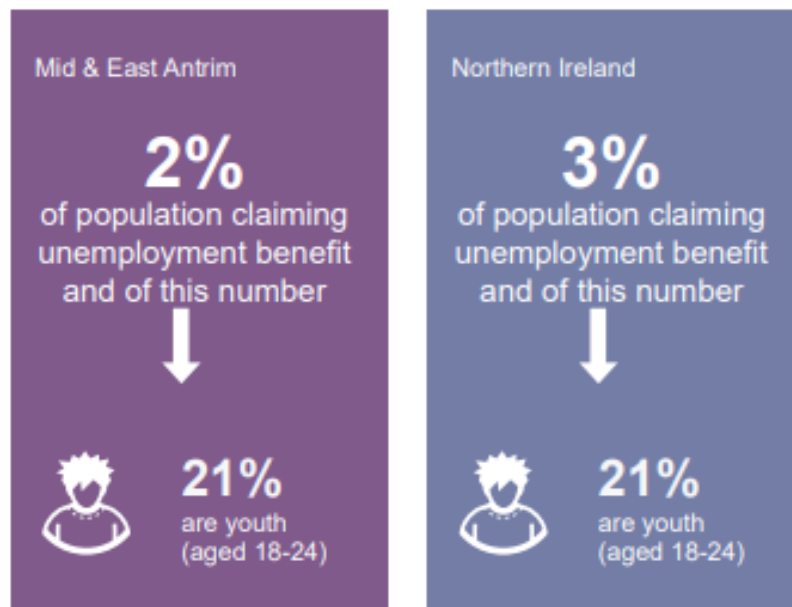


### Northern Ireland



In 2017 Mid & East Antrim had a self-employment rate of 15% which was lower than the NI average of 16%.<sup>2</sup>

In 2018, 2% of the population in Mid & East Antrim were claiming unemployment benefits. Approximately one-fifth of those in receipt of claiming benefits were young people (aged 18-24).<sup>3</sup>



<sup>1</sup> Office for National Statistics (ONS)

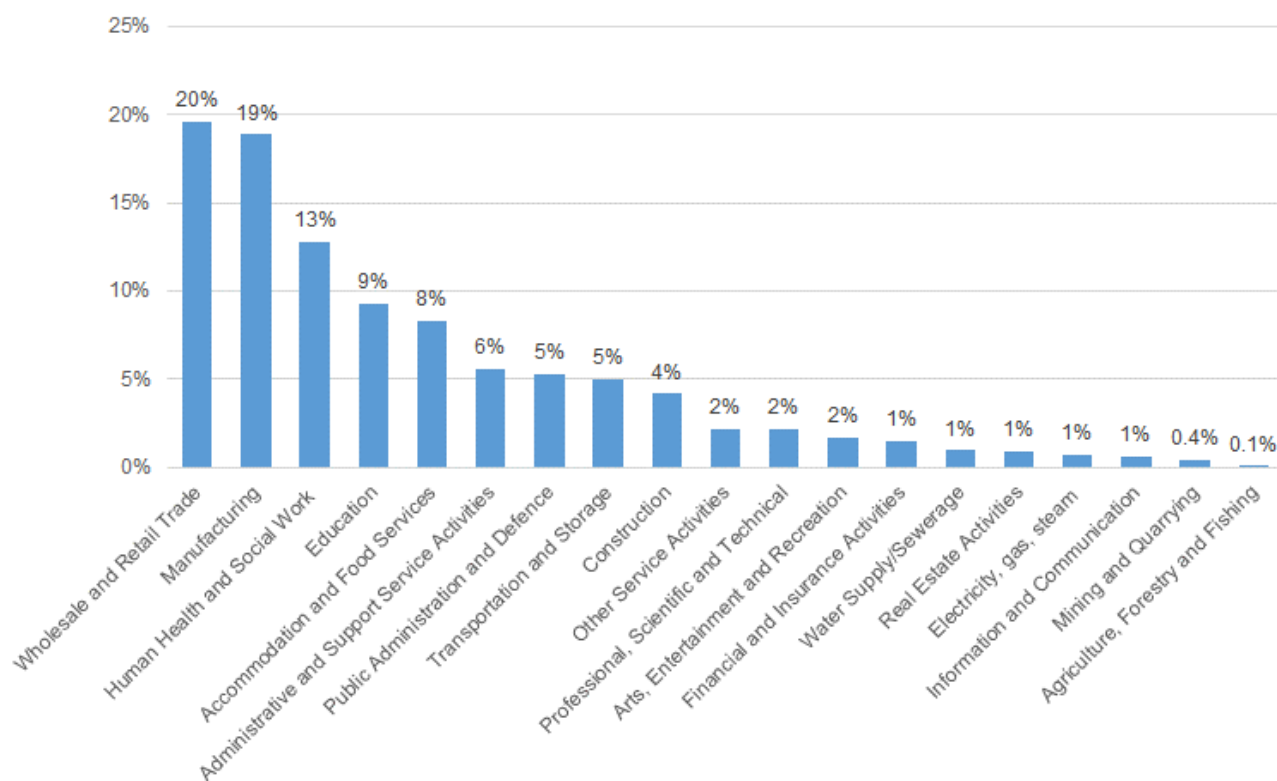
<sup>2</sup> Labour Force Survey, January-December 2018

<sup>3</sup> Claimant Count, NISRA

## Employee Jobs

In 2018, there were 43,949 jobs within Mid & East Antrim representing 6% of the NI total. The top 3 sectors in Mid & East Antrim are: Wholesale and Retail Trade (20%), Manufacturing (19%) and Human Health and Social Work (13%).<sup>4</sup>

**Figure 1: Employee Jobs by Industry, 2017**



The private sector accounted for 76% of all employee jobs in Mid & East Antrim in 2018 compared to the NI average of 73%.<sup>5</sup>

**Table 1: Public / Private Sector, 2018**

District Council	Totals	Public Sector %	Private Sector %
Mid and East Antrim	43,949	24%	76%
<b>Total</b>	<b>759,358</b>	<b>27%</b>	<b>73%</b>

<sup>4</sup> Industry statistics refer to 2017 data. Data for employee jobs by industry is published every 2 years.

<sup>5</sup> NI Business Register and Employment Survey

## Redundancies

In 2018 there were 2,498 redundancies across NI. Mid & East Antrim has the highest number of redundancies across all LGDs at 630 which represented one-quarter (25%) of the NI total.<sup>6</sup>

## Earnings

In 2018 annual median earnings by place of residence (£22,324) for Mid & East Antrim were higher than the figure for NI while annual median earnings by place of work (£19,651) were lower than the NI figure (£21,923).<sup>7</sup>



## Agriculture<sup>8</sup>

In total there are 1,793 farms in Mid and East Antrim which represents 7% of total NI farms. Of those, the majority of farm businesses in Mid and East Antrim are classified as very small (73%).

**Table 2: Number of farms by farm business size<sup>9</sup> and by District Council in Northern Ireland, June 2018**

District Council	Average SO/farm (€ '000)	Number of farms					Total
		V. Small	Small	Medium	Large		
Mid and East Antrim Borough	85.1	1310	246	105	132	1,793	
<b>NI Total</b>	<b>77.6</b>	<b>19,188</b>	<b>2,824</b>	<b>1,190</b>	<b>1,693</b>	<b>24,895</b>	

<sup>6</sup> Source: NISRA, Council Area Statistics

<sup>7</sup> Source: Annual Survey of Hours and Earnings, NISRA

<sup>8</sup> DAERA June Agricultural Census, June 2018

<sup>9</sup> Note: Farm business size classification is calculated from Standard Labour Requirements (SLR). The total SLR for each farm is calculated by multiplying its crop areas and livestock numbers by the appropriate SLR coefficients and then summing the results for all enterprises on the farm. A standard labour unit is equivalent to 1,900 hours of work per year.

Cattle and sheep farms constitute 79% of farms in Mid and East Antrim.

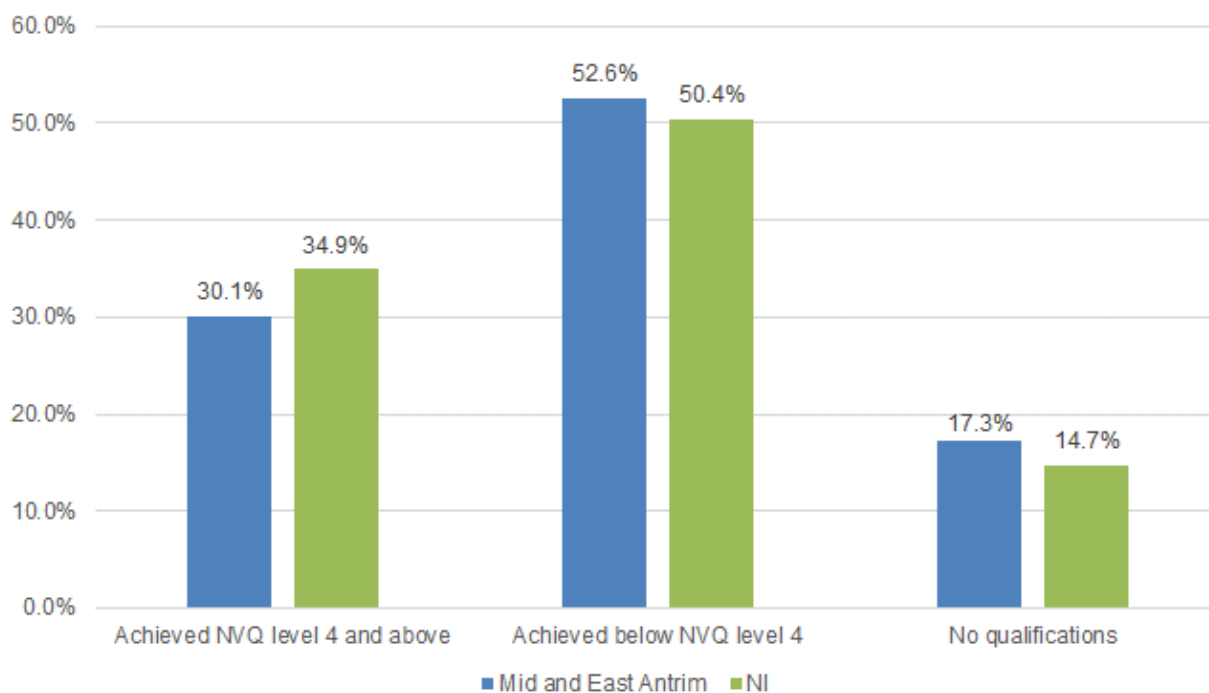
**Table 3: Top 3 farm types by number of farms by District Council in Northern Ireland, June 2018**

District Council	Poultry	Dairy	Cattle & Sheep		Total number of farms
			LFA <sup>10</sup>	lowland	
Mid and East Antrim Borough	75	208	1,150	274	1,793
<b>NI Total</b>	<b>639</b>	<b>2,545</b>	<b>14,700</b>	<b>5,109</b>	<b>24,895</b>

## Qualifications

In 2018, 30.1% of those aged 16-64 years were qualified to NVQ level 4 and above<sup>11</sup> in Mid & East Antrim compared to 34.9% for NI; and 17.3% had no qualifications compared with 14.7% in NI.<sup>12</sup>

**Figure 2: Qualifications based on working age population (16-64), 2018**



<sup>10</sup> Less Favoured Area

<sup>11</sup> This relates to those at degree level and above which includes foundation degrees, higher degrees, teaching and nursing degrees.

<sup>12</sup> NISRA, [Labour Force Survey 2018](#)

## Cross Border Movements

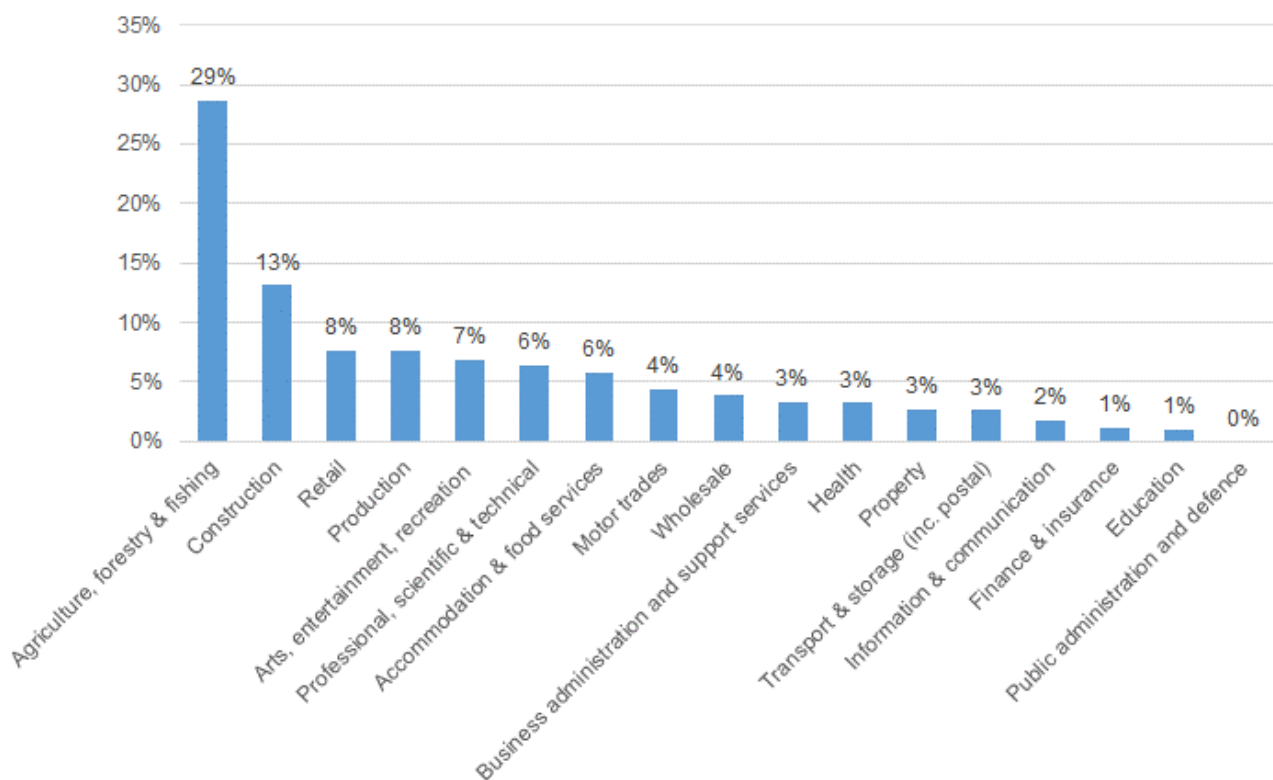
Analysis of Mobile Network Operator (MNO) information<sup>13</sup> indicates that that less than 1% of trips from NI to ROI by NI residents started in Mid and East Antrim Borough Council. Less than 1% of trips from ROI to NI by ROI residents ended in the council area.

On average residents made around 1 cross border trip per month. 23% of cross border travel was for work purposes and 77% was for social/leisure purposes.

## Business Profile

In 2019 there were 4,950 businesses located within Mid and East Antrim representing 7% of the NI population. The vast majority (91%) are classified as micro (0-9 employees). The top sectors in Mid and East Antrim are: Agriculture, forestry & fishing (29%), Construction (13%) and retail (8%).<sup>14</sup>

**Figure 3: Number of VAT and/or PAYE Registered Businesses Operating in Mid & East Antrim by Broad Industry Group, 2019**



## Foreign Direct Investment (FDI)

According to Invest NI's Mid and East Antrim Council Briefing<sup>15</sup>, over the period 2014/15 to 2018/19, 15 externally owned businesses were offered support that contributed towards investment commitments of £28m and assisted 4 jobs in the area.

<sup>13</sup> DfE (2018) [Cross Border Movements: The movement of people across the NI-Rol border](#)

<sup>14</sup> Source: NISRA, Inter-Departmental Business Register

<sup>15</sup> <https://secure.investni.com/static/library/invest-ni/documents/investni-support-council-area-mid-and-east-antrim-2019.pdf>

## **Web-links to useful data sources**

[Labour Force Survey](#)

[Claimant Count](#)

[Regional analysis and trends](#)

[Quarterly Employment Survey](#)

[Business Register and Employment Survey](#)

[Annual Business Inquiry](#)

[Redundancies](#)

[Annual Survey of Hours and Earnings](#)

[Regional Gross Value Added \(Balanced\)](#)

[NI Composite Economic Index](#)

[Broad Economy Sales and Exports Statistics](#)

[Inter Departmental Business Register](#)

[Agricultural Census 2018](#)

[Local Government Tourism Statistics](#)

[Invest NI Regional Profiles](#)

- [Eastern](#)
- [North Eastern](#)
- [North Western](#)
- [Southern](#)
- [Western](#)

[Northern Ireland Life and Times Survey 2018](#)

[Northern Ireland Trade and Investment Under 'No Deal'](#)

[The movement of people across the Northern Ireland - Republic of Ireland border](#)

[An analysis of migrant workers from the NI census](#)