

Derry City and Strabane District Council

Council Area Profile

**September 2019**

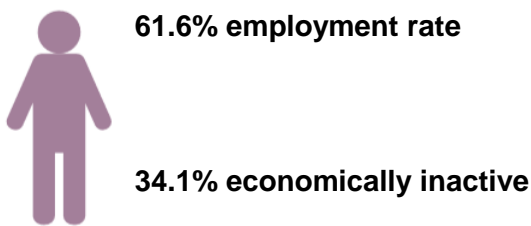
## GVA

GVA in Derry City and Strabane in 2017 was £2.6bn. This represented 6.5% of the NI total<sup>1</sup>.

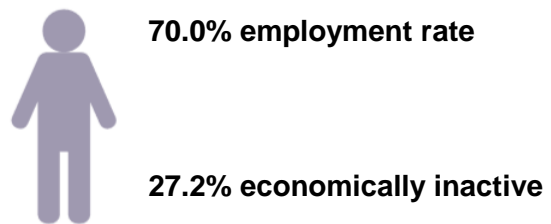
## Labour Market Structure

In 2018, the employment rate for NI was 70.0% and the economic inactivity rate was 27.2%. Derry City and Strabane reported the lowest employment rate (61.6%) and the highest inactivity rate (34.1%) in NI.

### Derry City and Strabane

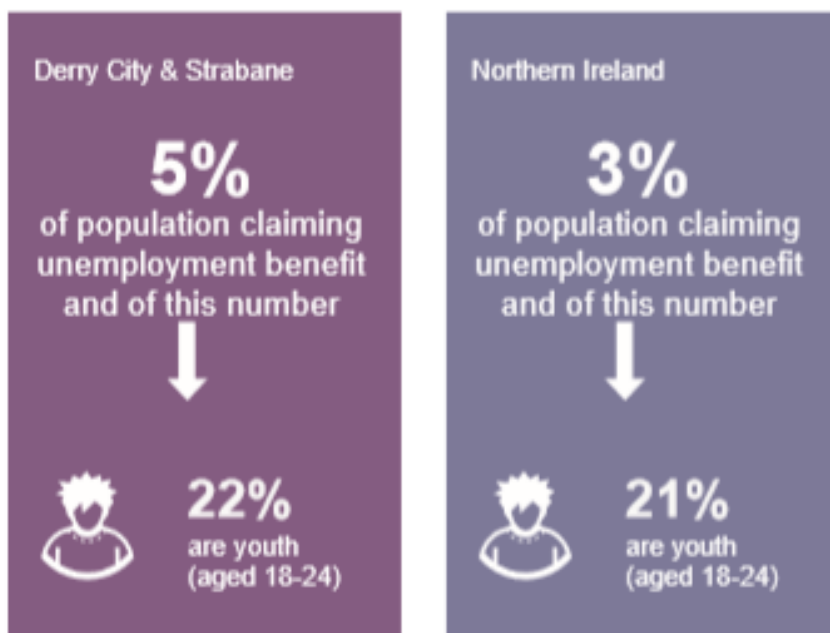


### Northern Ireland



In 2017 Derry City and Strabane had a self-employment rate of 13% compared to the NI average of 16%.<sup>2</sup>

In 2018, 5% of the population in Derry City and Strabane were claiming unemployment benefit which was the highest of any council area. Just over one-fifth of those in receipt of claiming benefits were young people (aged 18-24).<sup>3</sup>



<sup>1</sup> Office for National Statistics (ONS)

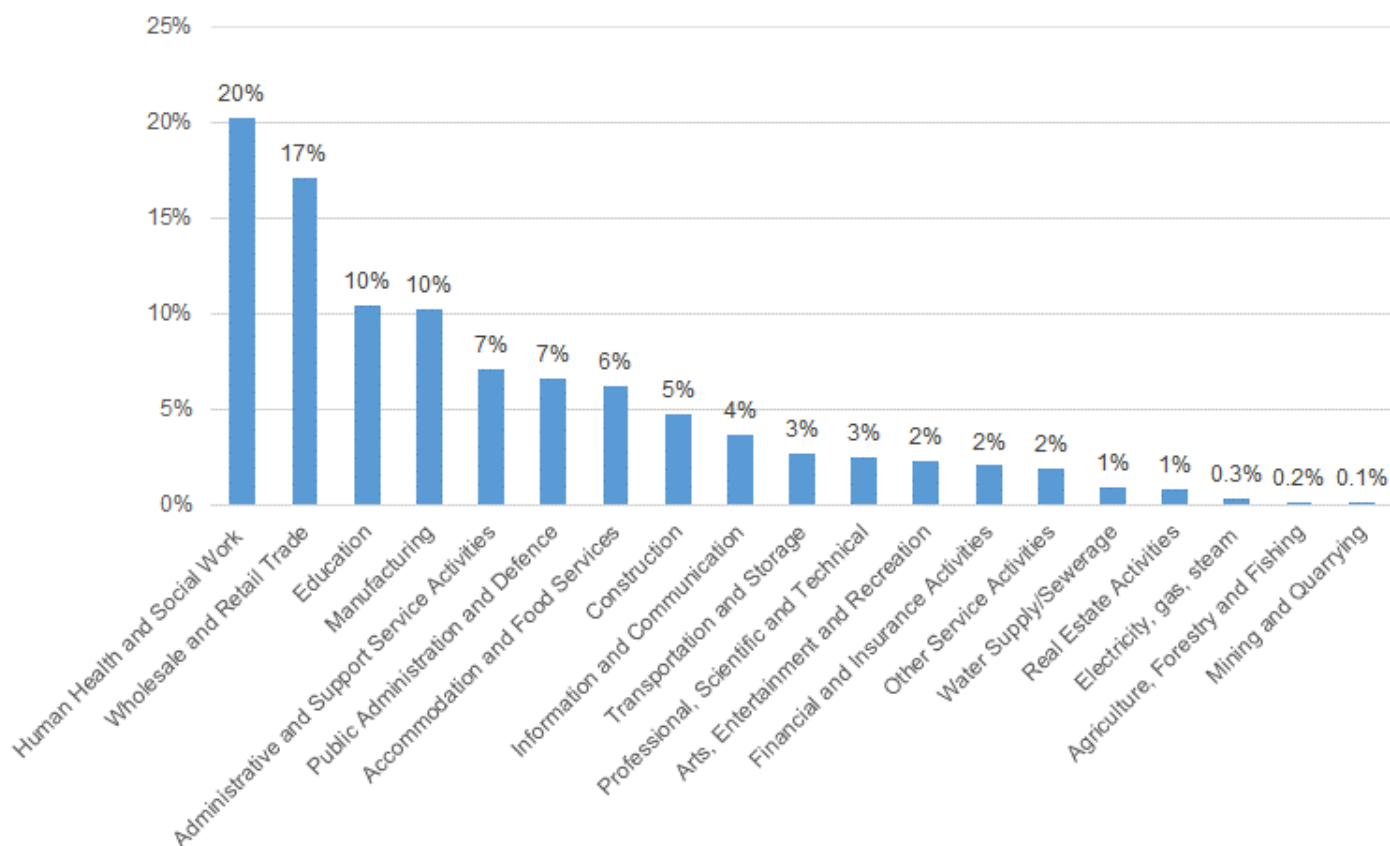
<sup>2</sup> Labour Force Survey, January-December 2018

<sup>3</sup> Claimant Count, NISRA

## Employee Jobs

In 2018, there were 58,196 jobs within Derry City and Strabane representing 8% of the NI total. Human Health and Social Work is Derry City and Strabane's largest sector (20%) followed by Wholesale and Retail Trade (17%).<sup>4</sup>

**Figure 1: Employee Jobs by Industry, 2017**



The private sector accounted for 67% of all employee jobs in Derry City and Strabane in 2018 compared to the NI average of 73%.<sup>5</sup>

**Table 1: Public / Private Sector, 2018**

District Council	Totals	Public Sector %	Private Sector %
Derry City and Strabane	58,196	33%	67%
<b>Total</b>	<b>759,358</b>	<b>27%</b>	<b>73%</b>

<sup>4</sup> Industry statistics refer to 2017 data. Data for employee jobs by industry is published every 2 years.

<sup>5</sup> NI Business Register and Employment Survey

## Redundancies

In 2018 there were 2,498 redundancies across NI. A total of 77 redundancies were in Derry City and Strabane representing 3% of the NI rate.<sup>6</sup>

## Earnings

When analysed by place of residence Derry City and Strabane had the lowest annual median earnings across all LGDs at £18,564. When analysed by place of work Derry City and Strabane had one of the lowest annual median earnings (£19,760), lower than the annual median earnings figure for NI (£21,923).<sup>7</sup>



## Agriculture<sup>8</sup>

In total there are 1,771 farms in Derry City and Strabane which represents 7% of total NI farms. The majority of farm businesses in Derry City and Strabane are classified as very small (75%), which is a similar position to the NI average.

**Table 2: Number of farms by farm business size<sup>9</sup> and by District Council in Northern Ireland, June 2018**

District Council	Average SO/farm (€ '000)	Number of farms					Total
		V. Small	Small	Medium	Large		
Derry City and Strabane	74.3	1,324	230	89	128	1,771	
<b>NI Total</b>	<b>77.6</b>	<b>19,188</b>	<b>2,824</b>	<b>1,190</b>	<b>1,693</b>	<b>24,895</b>	

<sup>6</sup> Source: NISRA, Council Area Statistics

<sup>7</sup> Source: Annual Survey of Hours and Earnings, NISRA

<sup>8</sup> DAERA June Agricultural Census, June 2018

<sup>9</sup> Note: Farm business size classification is calculated from Standard Labour Requirements (SLR). The total SLR for each farm is calculated by multiplying its crop areas and livestock numbers by the appropriate SLR coefficients and then summing the results for all enterprises on the farm. A standard labour unit is equivalent to 1,900 hours of work per year.

Cattle and Sheep farms constitute 82% of farms in Derry City and Strabane.

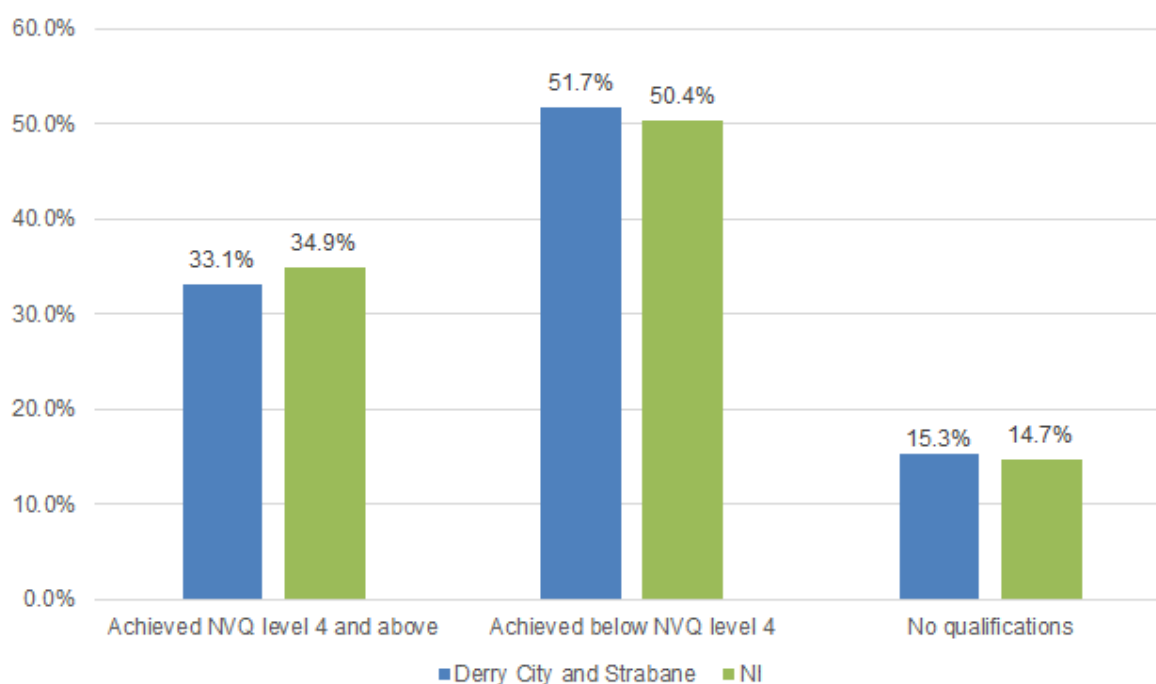
**Table 3: Top 3 farm types by number of farms by District Council in Northern Ireland, June 2018**

District Council	General Cropping	Dairy	Cattle & Sheep		Total number of farms
			LFA <sup>10</sup>	lowland	
Derry City and Strabane	45	182	1,279	181	1,771
<b>NI Total</b>	<b>574</b>	<b>2,545</b>	<b>14,700</b>	<b>5,109</b>	<b>24,895</b>

## Qualifications

In 2018, 33.1% of those aged 16-64 years were qualified to NVQ level 4 and above<sup>11</sup> in Derry City and Strabane compared to 34.9% for NI; and 15.3% had no qualifications compared with 14.7% in NI as a whole.<sup>12</sup>

**Figure 2: Qualifications based on working age population (16-64), 2018**



<sup>10</sup> Less Favoured Area

<sup>11</sup> This relates to those at degree level and above which includes foundation degrees, higher degrees, teaching and nursing degrees.

<sup>12</sup> NISRA, [Labour Force Survey 2018](#)

## Cross Border Movements

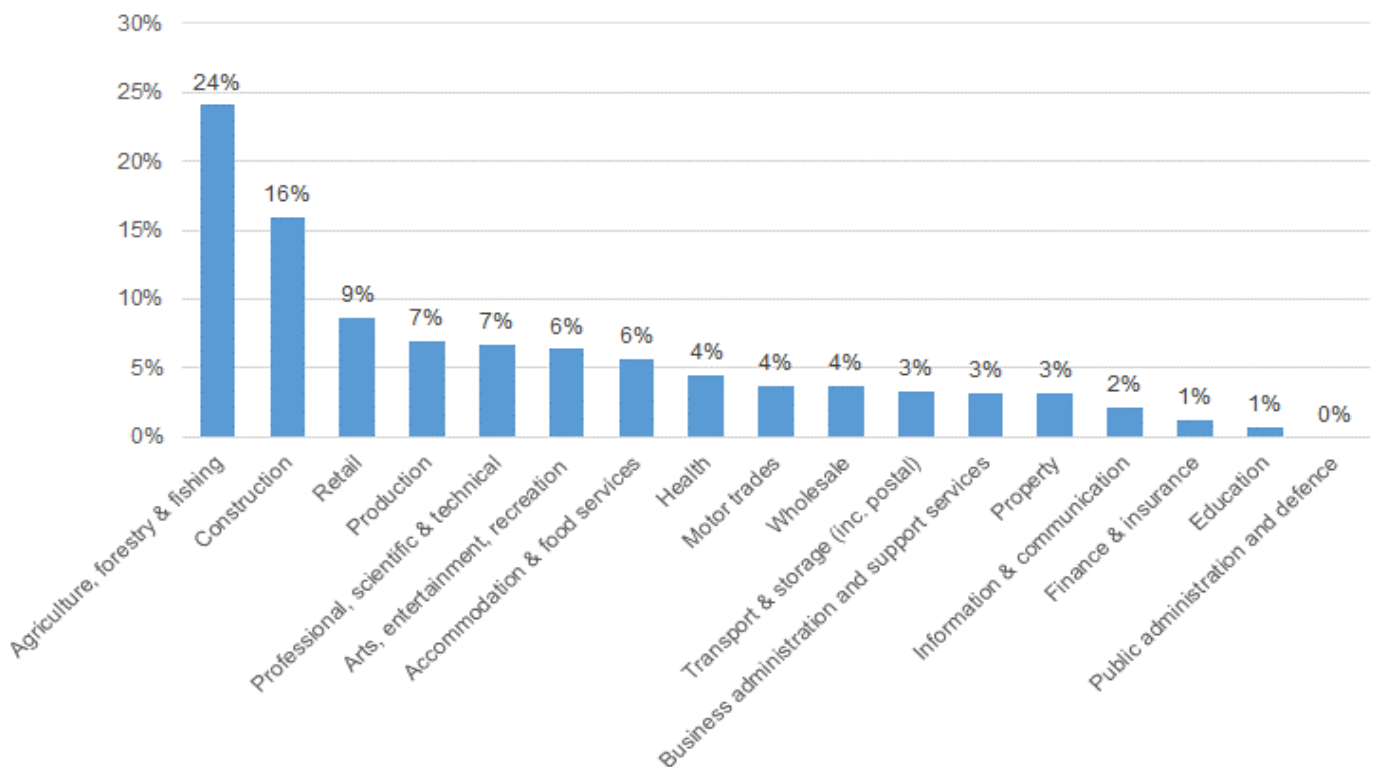
Analysis of Mobile Network Operator (MNO) information<sup>13</sup> shows that almost 44% of crossings from NI to ROI by NI residents started in Derry City and Strabane District Council. 21% of trips from ROI to NI by ROI residents ended in the district council.

On average residents made 4 cross border trips per week. 38% of cross border travel was for work purposes and 62% was for social/leisure purposes.

## Business Profile

In 2019 there were 5,260 businesses located within Derry City and Strabane representing 7% of the NI population. The vast majority (89%) are classified as micro (0-9 employees). The top 3 sectors in Derry City and Strabane are: Agriculture, Forestry & Fishing (24%), Construction (16%) and Retail (9%)<sup>14</sup>.

**Figure 3: Number of VAT and/or PAYE Registered Businesses Operating in Derry City and Strabane by Broad Industry Group, 2019**



## Foreign Direct Investment (FDI)

According to Invest NI's Derry City and Strabane Council Briefing<sup>15</sup>, over the period 2014/15 to 2018/19, 24 externally owned businesses were offered support that contributed towards investment commitments of £204m and assisted 1,684 jobs in the area.

<sup>13</sup> DfE (2018) [Cross Border Movements: The movement of people across the NI-Rol border](#)

<sup>14</sup> Source: NISRA, Inter-Departmental Business Register

<sup>15</sup> <https://secure.investni.com/static/library/invest-ni/documents/investni-support-council-area-derry-and-strabane-2019.pdf>

## **Web-links to useful data sources**

[Labour Force Survey](#)

[Claimant Count](#)

[Regional analysis and trends](#)

[Quarterly Employment Survey](#)

[Business Register and Employment Survey](#)

[Annual Business Inquiry](#)

[Redundancies](#)

[Annual Survey of Hours and Earnings](#)

[Regional Gross Value Added \(Balanced\)](#)

[NI Composite Economic Index](#)

[Broad Economy Sales and Exports Statistics](#)

[Inter Departmental Business Register](#)

[Agricultural Census 2018](#)

[Local Government Tourism Statistics](#)

[Invest NI Regional Profiles](#)

- [Eastern](#)
- [North Eastern](#)
- [North Western](#)
- [Southern](#)
- [Western](#)

[Northern Ireland Life and Times Survey 2018](#)

[Northern Ireland Trade and Investment Under 'No Deal'](#)

[The movement of people across the Northern Ireland - Republic of Ireland border](#)

[An analysis of migrant workers from the NI census](#)