

Causeway Coast and Glens Borough Council

Council Area Profile

**September 2019**

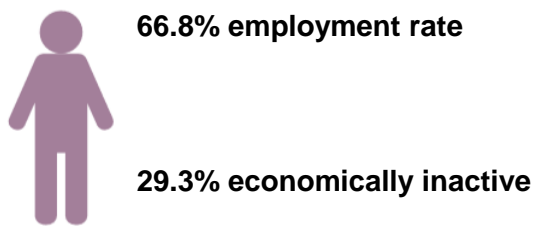
## GVA

GVA in Causeway Coast & Glens in 2017 was £1.9bn. This represented 4.8% of the NI total<sup>1</sup>.

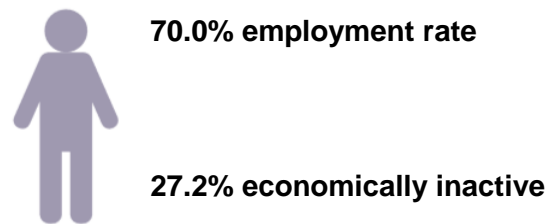
## Labour Market Structure

In 2018, the employment rate for NI was 70.0% and the economic inactivity rate was 27.2%. Causeway Coast & Glens had an employment rate below the NI rate and an inactivity rate higher than the NI rate (66.8% and 29.3% respectively).

### Causeway Coast and Glens

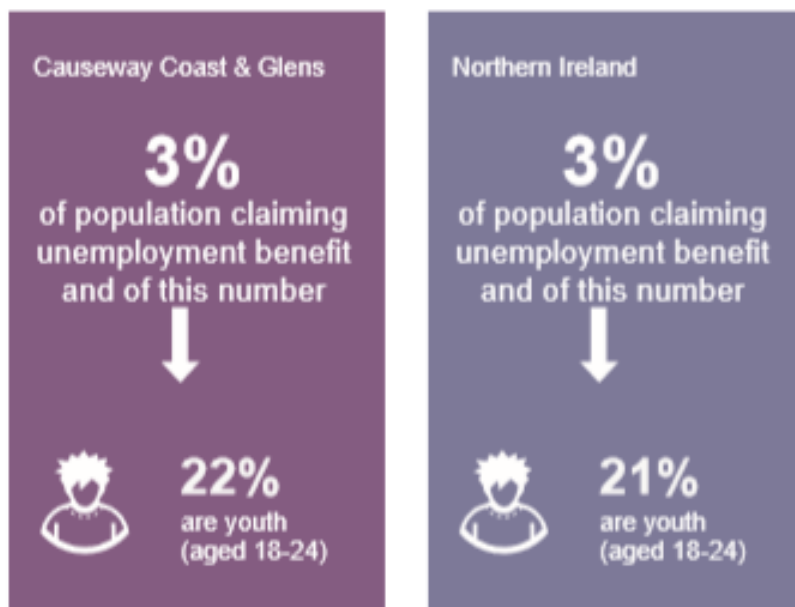


### Northern Ireland



In 2017 Causeway Coast & Glens had the joint highest self-employment rate at 26% compared to the NI average of 16%.<sup>2</sup>

In 2018, 3% of the population in Causeway Coast and Glens were claiming unemployment benefit. Approximately one-fifth of those in receipt of claiming benefits were young people (aged 18-24).<sup>3</sup>



<sup>1</sup> Office for National Statistics (ONS)

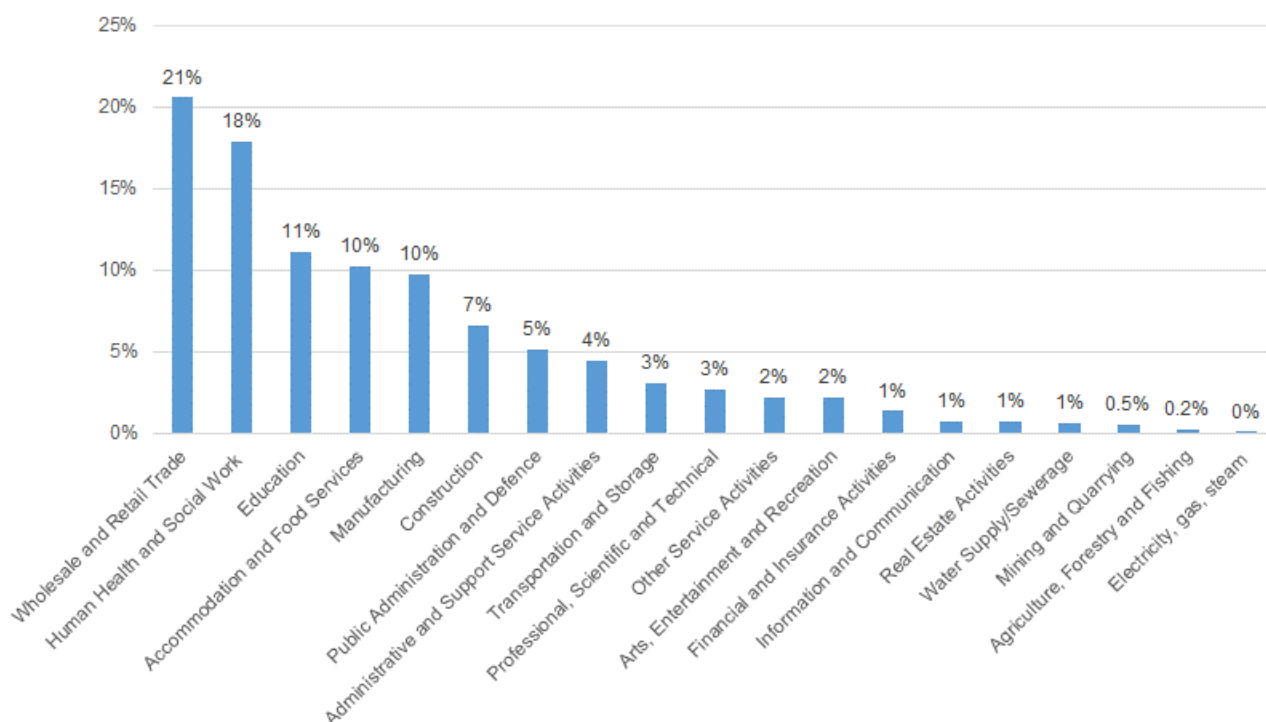
<sup>2</sup> Labour Force Survey, January-December 2018

<sup>3</sup> Claimant Count, NISRA

## Employee Jobs

In 2018, there were 41,733 jobs within Causeway Coast & Glens representing 5% of the NI total. Wholesale and retail is Causeway Coast and Glens' largest sector (21%) followed by Human Health and Social Work (18%) and Education (11%).<sup>4</sup>

**Figure 1: Employee Jobs by Industry, 2017**



The private sector accounted for three-quarters (75%) of all employee jobs in Causeway Coast & Glens in 2018 compared to the NI average (73%).<sup>5</sup>

**Table 1: Public / Private Sector, 2018**

District Council	Totals	Public Sector %	Private Sector %
Causeway Coast & Glens	41,733	25%	75%
<b>Total</b>	<b>759,358</b>	<b>27%</b>	<b>73%</b>

<sup>4</sup> Industry statistics refer to 2017 data. Data for employee jobs by industry is published every 2 years.

<sup>5</sup> NI Business Register and Employment Survey

## Redundancies

In 2018 there were 2,498 redundancies across NI. A total of 19 redundancies were in Causeway Coast and Glens representing 1% of the NI total.<sup>6</sup>

## Earnings

In 2018 annual median earnings by place of residence (£19,900) and place of work (£19,240) for Causeway Coast & Glens were lower than the annual median earnings figure for NI (£21,923).<sup>7</sup>



## Agriculture<sup>8</sup>

In total there are 2,501 farms in Causeway Coast & Glens which represents 10% of total NI farms. The majority of farm businesses in Causeway Coast and Glens are classified as very small (70%).

**Table 2: Number of farms by farm business size<sup>9</sup> and by District Council in Northern Ireland, June 2018**

District Council	Average SO/farm (€ '000)	Number of farms					Total
		V. Small	Small	Medium	Large		
Causeway Coast & Glens	89.8	1,740	352	155	254	2,501	
<b>NI Total</b>	<b>77.6</b>	<b>19,188</b>	<b>2,824</b>	<b>1,190</b>	<b>1,693</b>	<b>24,895</b>	

<sup>6</sup> NISRA, Council Area Statistics

<sup>7</sup> Annual Survey of Hours and Earnings, NISRA

<sup>8</sup> DAERA June Agricultural Census, June 2018

<sup>9</sup> Note: Farm business size classification is calculated from Standard Labour Requirements (SLR). The total SLR for each farm is calculated by multiplying its crop areas and livestock numbers by the appropriate SLR coefficients and then summing the results for all enterprises on the farm. A standard labour unit is equivalent to 1,900 hours of work per year.

Cattle and Sheep farms constitute 76% of farms in Causeway Coast and Glens.

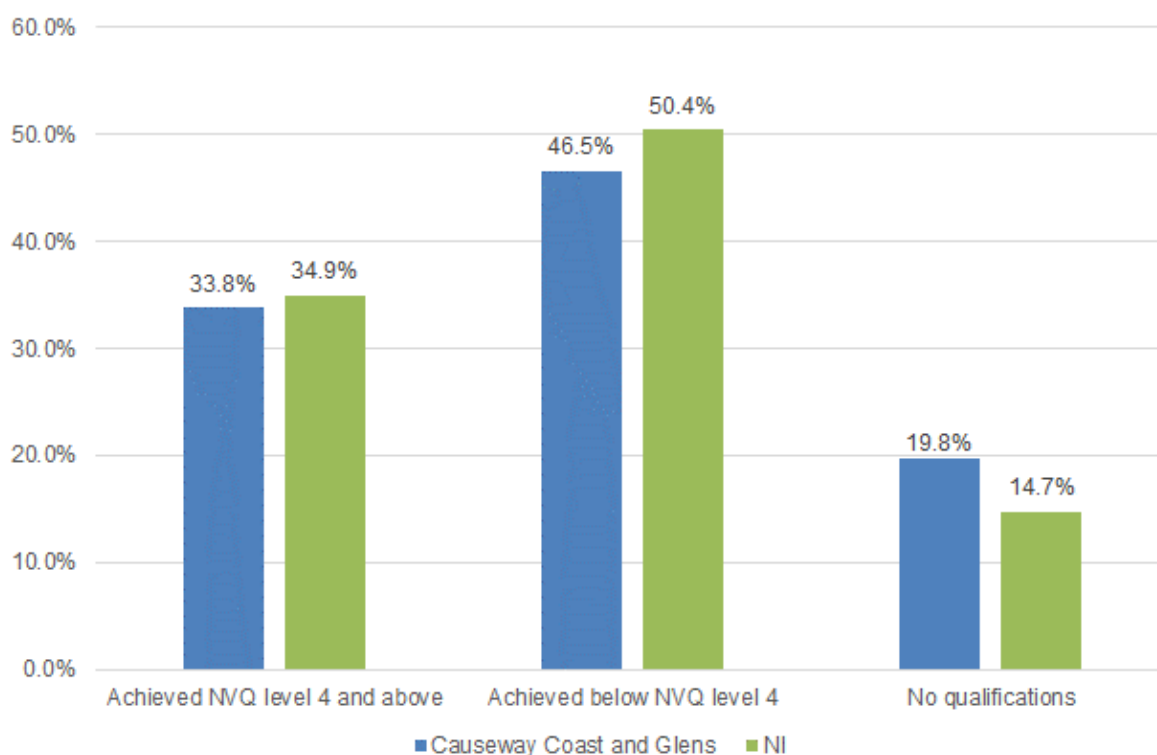
**Table 3: Top 3 farm types by number of farms by District Council in Northern Ireland, June 2018**

District Council	Mixed	Dairy	Cattle & Sheep		Total number of farms
			LFA <sup>10</sup>	lowland	
Causeway Coast & Glens	83	314	1,329	582	2,501
<b>NI Total</b>	<b>503</b>	<b>2,545</b>	<b>14,700</b>	<b>5,109</b>	<b>24,895</b>

### Qualifications

In 2018, 33.8% of those aged 16-64 years were qualified to NVQ level 4 and above<sup>11</sup> in Causeway Coast & Glens which was lower than the NI average of 34.9%. Causeway Coast & Glens had one of the highest rates of 16-64 year olds who had no qualifications (19.8%) compared to the NI average (14.7%).<sup>12</sup>

**Figure 2: Qualifications based on working age population (16-64), 2018**



<sup>10</sup> Less Favoured Area

<sup>11</sup> This relates to those at degree level and above which includes foundation degrees, higher degrees, teaching and nursing degrees.

<sup>12</sup> NISRA, [Labour Force Survey 2018](#)

## Cross Border Movements

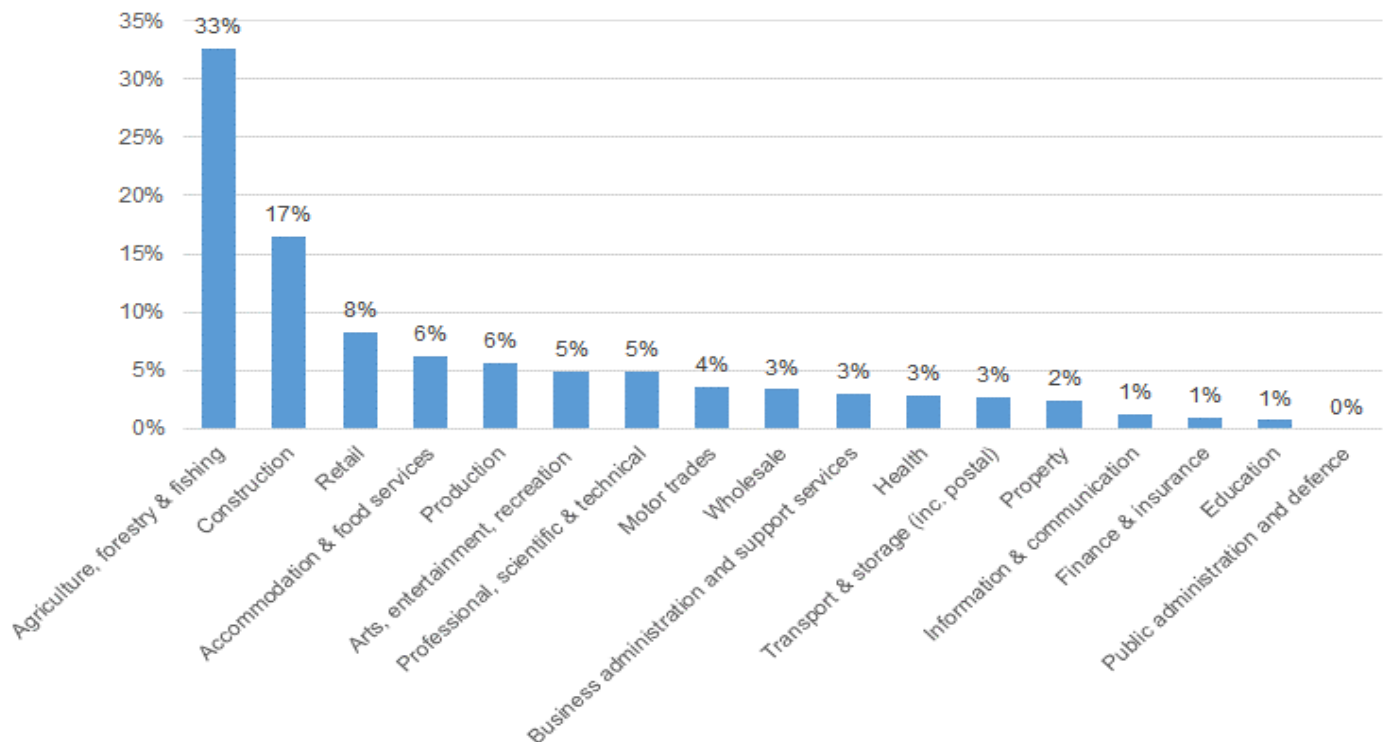
Analysis of Mobile Network Operator (MNO) information<sup>13</sup> indicates that less than 4% of cross border trips from NI to ROI by NI residents started in the Causeway Coast and Glens Borough Council. Approximately 4% of crossings from ROI to NI by ROI residents ended the LGD.

On average residents made around 1 cross border trip per fortnight. 33% of cross border travel was for work purposes and 67% was for social/leisure purposes.

## Business Profile

In 2019 there were 6,075 businesses located within Causeway Coast & Glens representing 8% of the NI population. The vast majority (92%) are classified as micro (0-9 employees). The top 3 sectors in Causeway Coast & Glens are: Agriculture, Forestry & Fishing (33%), Construction (17%) and Retail (8%).<sup>14</sup>

**Figure 3: Number of VAT and/or PAYE Registered Businesses Operating in Causeway Coast and Glens by Broad Industry Group, 2019**



## Foreign Direct Investment (FDI)

According to Invest NI's Causeway Coast & Glens Council Briefing<sup>15</sup>, over the period 2014/15 to 2018/19, 8 externally owned businesses were offered support that contributed towards investment commitments of £10m and assisted 32 jobs in the area.

<sup>13</sup> DfE (2018) [Cross Border Movements: The movement of people across the NI-Rol border](#)

<sup>14</sup> NISRA, Inter-Departmental Business Register

<sup>15</sup> <https://secure.investni.com/static/library/invest-ni/documents/investni-support-council-area-causeway-coast-and-glens-2019.pdf>

## **Web-links to useful data sources**

[Labour Force Survey](#)

[Claimant Count](#)

[Regional analysis and trends](#)

[Quarterly Employment Survey](#)

[Business Register and Employment Survey](#)

[Annual Business Inquiry](#)

[Redundancies](#)

[Annual Survey of Hours and Earnings](#)

[Regional Gross Value Added \(Balanced\)](#)

[NI Composite Economic Index](#)

[Broad Economy Sales and Exports Statistics](#)

[Inter Departmental Business Register](#)

[Agricultural Census 2018](#)

[Local Government Tourism Statistics](#)

[Invest NI Regional Profiles](#)

- [Eastern](#)
- [North Eastern](#)
- [North Western](#)
- [Southern](#)
- [Western](#)

[Northern Ireland Life and Times Survey 2018](#)

[Northern Ireland Trade and Investment Under 'No Deal'](#)

[The movement of people across the Northern Ireland - Republic of Ireland border](#)

[An analysis of migrant workers from the NI census](#)