

# Prisons 2020

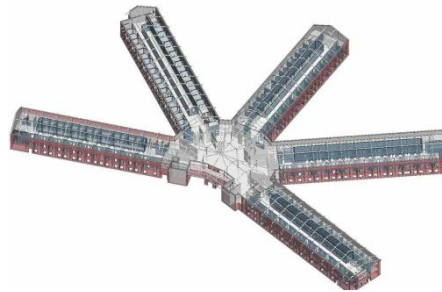
## *Northern Ireland Prison Service Estates 2020*

*A Discussion Document*

**December 2018**



**Hydebank Wood Secure College**



**240 Block Magilligan**



**360 Cell Block Maghaberry**



**Proposed New Female Facility at Hydebank Wood**

# Foreword



The Northern Ireland Prison Service (NIPS) has a central role to play in seeking to make our community safe as we contribute to reducing reoffending and improving the effectiveness of the justice system. It is essential that we hold those in our care safely and securely. It is equally important that we make the community safer by supporting and challenging people to change as we focus on rehabilitation, resettlement and reintegration into society. To do this it is important that we have the right infrastructure.

Successive Prison reports have highlighted the constraints placed on NIPS by our ageing prison estate. Limited year on year funding is being used to maintain significant sections of our estate simply to keep them operational. Magilligan Prison is urgently in need of redevelopment, a separate facility for female prisoners is a priority and we have to date been unable to finalise the three mini Prison model envisaged for Maghaberry by the Prison Review Team (PRT) led by Dame Anne Owers.

The Prisons 2020 discussion paper NIPS launched in July 2017, recognised that it was timely to carry out a review of the NIPS Estate Strategy, given the challenging financial environment within which the public sector is operating and the limited funding that is likely to be available over the coming years. The aim of the review was not to question the need for the infrastructure changes NIPS had already identified, but rather to consider if other delivery models could be identified.

I am very grateful to the Capital Estates Team for the work they have carried out to date to review the prison estate and to identify alternative models to deliver the remaining recommendations as set out by the PRT Report. This brochure provides more information about the proposed new delivery models which I believe will help us deliver decent, secure and fit for purpose accommodation for our staff and the people in our care.

A handwritten signature in black ink that reads "Ronnie Armour". Below the signature is a horizontal line.

**Ronnie Armour**  
**Director General**  
**Northern Ireland Prison Service**

# Estate Strategy

The Prison Review report published in 2011 by Dame Anne Owers and her team set forty wide ranging recommendations to reform the prison system in Northern Ireland.

In 2013 NIPS finalised an Estate Strategy in response to the report. This Estate Strategy outlined our vision for the future. Recognising that well designed prisons contribute to the rehabilitation of people in custody as well as being conducive to health and productive workplaces for our staff.

In July 2017 NIPS launched the discussion document '*Prisons 2020: Driving Continuous Improvement in the Prison Service*'. This sought the views of our staff, the public and other stakeholders on how NIPS should deliver rehabilitation through: 'Our People', 'Our Services', 'Our Infrastructure', and 'Our Partnerships'.

Prisons 2020 recognised the importance of keeping our Estate Strategy under review. This is essential in the context of the challenging financial environment within which the public sector is operating. The purpose of such a review is not to question the need for the infrastructure changes, but rather it is to consider if other delivery models can be identified. In view of the funding that is likely to be available over the coming years it would be prudent for NIPS to keep our Estates Strategy under review.

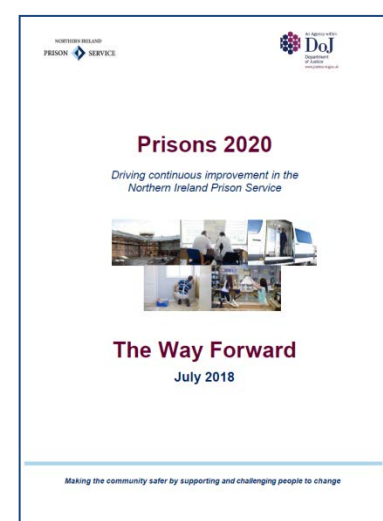
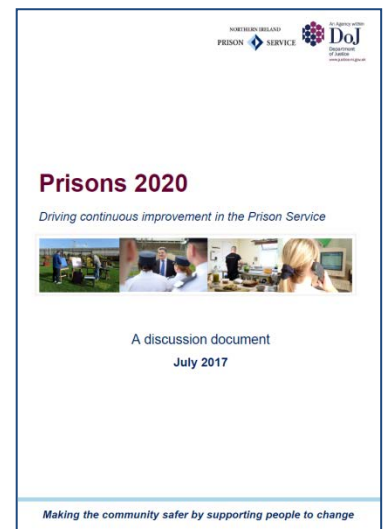
Alternative delivery models are being developed for the NIPS Estate Strategy such as the Redevelopment of Magilligan and a New Female Facility at Hydebank Wood. Initial findings suggest this will reduce the original Estate Strategy cost of £350 million by approximately 50%. As the projects progress and information is received from this discussion document final costs will be refined and design proposals confirmed.

## Feedback

The discussion on Prisons 2020 concluded on 29 September 2017 and the responses received indicated there was support for the alternative delivery models to the NIPS Estate Strategy. In summary, respondents:

- Universally supported a prison remaining on the Magilligan site;
- Questioned the appropriateness of the co-location of young men and women on the same site. Whilst there was support for a completely separate female facility, responses indicated that the most important aspect was for two discrete areas to be developed for women and young men; and
- Strongly supported the need for the current infrastructure programme at Maghaberry.

More information regarding the feedback received and the planned way forward can be found in '*Prisons 2020: The Way Forward*' which was published on 31 July 2018.



# Maghaberry

## *What the PRT said:*

### **PRT Recommendation 5**

The PRT recommended that the Maghaberry site should be reconfigured into three 'mini-prison' areas:

- for short-sentenced and remand prisoners and new committals;
- long and life sentenced prisoners; and
- Category A and separated prisoners with appropriate regimes and security for each.

## **HIGH SECURITY FACILITY**

With the completion of the 360 Cell Accommodation Block due for Autumn 2019, the High Security Facility (HSF) is the outstanding project in the programme to reconfigure the Maghaberry site into three mini prisons.

Following careful consideration and detailed analysis, it was determined there is no alternative model to the original proposal to create a High Security Facility.

The original proposal is the best delivery model for the management of a disparate prisoner population, providing dedicated accommodation and support services to Category A prisoners (and others classified as High Risk).

## **NEW VISITS**

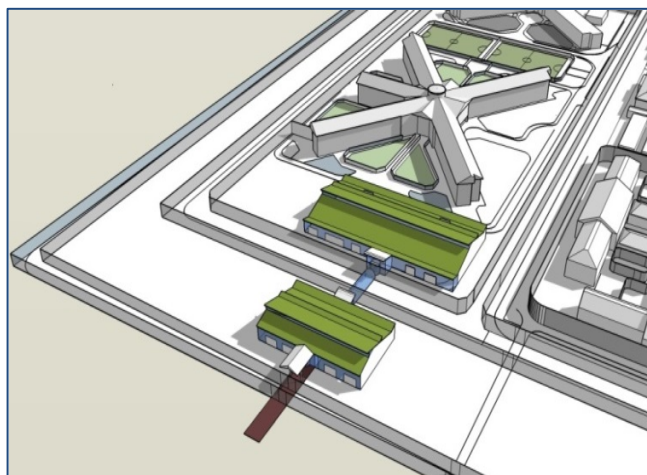
The Northern Ireland Prison Service recognises the importance of regular quality family visits in the rehabilitation and resettlement of prisoners.

The original proposal recognised the need to increase the capacity and improve the experience for prisoner visitors.



Other than some design rationalisation, there is no alternative model to the proposal to create a New Visits Facility in a more central location to the main prisoner accommodation areas.

This new model will meet current and future requirements, deliver an enhanced and more family focussed visitor experience which is crucial, in our experience, for the rehabilitation of prisoners.



**New Visits and Welcome Centre beside Davis House**

# Magilligan

The original NIPS Estates Strategy outlined plans for the reconfiguration of Magilligan which involved the redevelopment of the entire prison.

However, despite receiving approval to rebuild Magilligan, capital funding is not yet available and the public sector is facing budgetary pressures.

An alternative delivery model will provide:-

- a new 240 Accommodation Block;
- new Independent Living Units (ILU's) for prisoners;
- a new Visits/Welcome Centre;
- a new energy centre; and
- a new Admin building.

The new proposed model will provide modern, fit for purpose, staff efficient facility which will deliver a safe, decent and secure environment for the rehabilitation of prisoners.

## What the PRT said:

### PRT Recommendation 6

*A clear decision should be made on the role and future of Magilligan.*



Proposed 240 Block



Proposed Admin Building



## INCOMING ENERGY SUPPLY

The existing energy link to Magilligan does not offer adequate capacity to meet the current demands of a growing prisoner population.

A new supply source will afford the capability required to deliver progressive rehabilitation programmes and meet the pressures arising from the prisoner population.

The alternative delivery model identified through the Prisons 2020 review considered the need for both a new electricity and a gas supply and concluded that an electricity supply alone will be sufficient to meet the ongoing demands.

# Female Facility at Hydebank Wood

A project was established as part of the original NIPS Estates Strategy to develop a six bed step-down facility for female prisoners and a new facility for females in the grounds of the Hydebank Wood Estate. The project delivered a Step-down facility completed in 2015, however, despite having approval to create the separate female facility, capital funding is not yet available and the public sector is still facing budgetary pressures.

The alternative delivery model identified through the Prisons 2020 review provided an opportunity to create a separate discrete Female Facility within the current Hydebank Wood site by redeveloping the existing Ash and Beech Houses completely separating them from the Secure College. Once redeveloped it will provide:-

- An open, therapeutic environment;
- Single en-suite accommodation;
- A new Visits / Welcome Centre;
- A new Independent Living Unit (ILU) for female prisoners;
- A new kitchen; and
- A health centre

This alternative delivery model will deliver the much needed and fit for purpose Female Facility as recommended by the PRT and successive prison reports.

## What the PRT said:

### PRT Recommendation 36

*A new small custodial facility for women should be built, staffed and run around a therapeutic model.*



New Room Layout



Association Space



Birds Eye View of a Landing

# Key Milestones

## PRISONS 2020

*Outcome: We have a modern, progressive Northern Ireland Prison Service where we make the community safer by supporting and challenging people to change*



## ESTATES 2020

*Outcome: We have a fit for purpose estate which supports new ways of working*



### MAGHABERRY

### MAGILLIGAN

### HYDEBANK



#### Key Milestones

##### **By end 2019:**

- Completed 360 Cell Accommodation Block

##### **By 2020-22:**

- New Visits/Welcome Centre

#### Key Milestones

##### **By end 2019:**

- Upgraded Incoming Energy Supply

##### **By 2020-22:**

- Redevelopment of Magilligan underway

#### Key Milestones

##### **By 2019**

- Refurbishment of Learning and Skills Completed

##### **By 2020-22:**

- New Separate Female Facility

# How to give your views

‘Northern Ireland Prison Service Estates 2020’ is a discussion document and we are keen that you have the opportunity to give your views on our proposals to modernise the Prison Estate.

This will enable us to improve our prisons to ensure we play our part in building a safe community in Northern Ireland.

The review period for this discussion document will last until 28 February 2019 and there are two ways to give your views:

- Email us at: [NIPSEstate.2020@justice-ni.x.gsi.gov.uk](mailto:NIPSEstate.2020@justice-ni.x.gsi.gov.uk)
- Write to us at: Capital Estates Programme  
Hydebank Wood  
Hospital Rd,  
Belfast  
BT8 8NA  
Northern Ireland